



ANNIVERSARY

GOLF APPAREL BRANDS INC.

LA MODE®



CLARK & GREGORY

Custom Embroidery and Private Label Specialists



35th Anniversary Edition (1978-2013)

Dear Customers & Friends,

We are proud to have reached 35 Years...where has all the time gone?!

In 1978 it all began. I launched the La Mode golfwear line, a dream of mine that was eventually realized from many years of retail and golf experience. La Mode quickly flourished into a well-known golf brand - leading the apparel side of the industry. Through the years, we have been the exclusive apparel providers for 7 U.S. Open's, hundreds of PGA Tour Events and countless professionals including some of the biggest stars in the game. We also have cherished the more personable events/accounts that we work with which have included thousands of member-guests, invitational tournaments, team uniforms, corporate outings, tee gifts and more!

We have compiled a timeline of our historic events to share with you!

- 1989 - We moved into our 100,000+ sq. ft. office, embroidery facility and warehouse (LA)
- 1990's - Owned U.S. License for Lyle and Scott Brand, sponsored Lee Westwood
- 1992 - We launched the wildly successful Fairway Blues brand with tour sensation and friend Phil Mickelson
- 1999 - We bought 'Clark & Gregory' and moved the company from Michigan to California
- 2002 - Renamed, 'La Mode Apparel Group' to 'Golf Apparel Brands, Inc.' "GABI"
- 2008 - Purchased Sahara Company, a well known 45 year-old golf brand
- 2011 - Launch of the 'NatureTech Brand' - our current top-seller

Through the years, we have sold almost all fine U.S. Golf Shops and their respective events which have led to an in-house design library of over two hundred thousand digitized logos! Additionally, we have developed thousands of private labels for various accounts including the "Who's who" of prestige shops, tournaments, sporting events, colleges, and major corporations.

I am also proud to say we have some of the most experienced staff in the business with an average tenure of over 20 years. Lupe Sandoval, our embroidery manager has joined me throughout the 35-year journey. I am joined in the business with my amazing wife of 30 years, Wendy. We also welcome into the business, our son E.J., who has recently earned his graduate degree in business from the Univ. of San Francisco.

While the economy and industry have presented some challenges, I am proud that our many years of success have afforded us the resilience to be here for our customers. We continue to strive to be your year-round supplier of core golfwear and quality custom embroidery.

Thank you for choosing Golf Apparel Brands. We are proud to be here for you and appreciate the relationships we have made more than anything.

From our family to yours, we look forward to servicing your needs for many years to come!

Warmest Regards,

Eddie Kahn
Founder & CEO

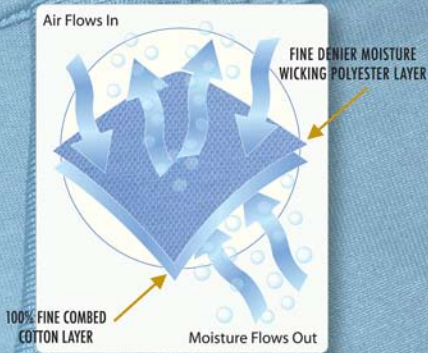


Table of Contents

NatureTech™ Story.....	3
NatureTech™ Shirts.....	4-13
La mode Polos.....	14-17
Clark & Gregory Shirts.....	18-25
Cashmerlon Sweaters, Cardigans & Vests.....	26-27
Pima Cotton Outer Zips.....	28-29
Pima Cotton Sweaters & Vests.....	30-31
100% Cashmere Sweaters & Vests.....	32
100% Merino Wool Sweaters & Vests.....	33
Windshirts & Windvest.....	34
Fleece.....	35
Rainwear.....	36-37
Navy-Real-Blue-White Group.....	38-39
Black-Stone Group.....	40-41
Navy-Stone-Red Group.....	42-43

natureTECH™
EZ-Care/EZ-Wear

NatureTech™ The #1 Hybrid Sports Fabric Technology



NatureTech™ Story

Our unique plaited process pairs a natural layer of 100% fine combed cotton for comfort next to your skin with a performance layer of fine denier moisture wicking polyester on the surface of the fabric. The layers work in tandem to cool the body and allow moisture to quickly evaporate. We are confident that once you wear a NatureTech™ garment, you will ask for it by name.

**“ Look Good, Play Well, and Wear
The Best - NatureTech™! ”**

EZ-CARE

- Wash & Wear
- Shrink Resistant
- Wrinkle Resistant
- Stain Resistant
- Color Fast
- Durable, Long Life

EZ-WEAR

- Quick Dry
- Cool
- Comfortable
- Retains Shape
- Odor Resistant
- Rich Look and Feel

NatureTech® is an Exclusive Trade Mark of Golf Apparel Brands Inc.

nature
EZ-Care/EZ-Wear

STYLE: 290

natureTECH™
EZ-Care/EZ-Wear

STYLE: 280



BLK BRG JAD FOR BUT LAV LTB MAR SAG



ORC RBL LIM RED RYL NAV SIL STO WHT

290 - Men's Open Sleeve Polo, 3-Button Placket and Knit Collar

Sizes: S M L XL 2XL 3XL 4XL



BLK BRG BUT FOR JAD LAV LIM LTB MAR NAT



NAV ORC PUR RBL RED RYL SAG SIL WHT YEL

280 - Men's Short Sleeve Jersey Polo, with Raised Ottoman Collar and Cuffs

Sizes: S M L XL 2XL 3XL 4XL



BLK BRG CBL FOR MAR NAV



ORC RED RYL SAG SIL WHT

123 - Men's Open Sleeve Jersey Solid Hi-Crew Neck Ribbed Collar.

Sizes: S M L XL 2XL 3XL 4XL



nature
EZ-Care/EZ-Wear

STYLE: 281

natureTECH™
EZ-Care/EZ-Wear

STYLE: 280L



281 - Ladies' Short Sleeve Jersey V-Neck Johnny Collar with Ottoman Detail on Collar, Hemmed Sleeves.

Sizes: XS S M L XL 2XL



280L - Ladies' Short Sleeve Jersey Polo, with Raised Ottoman Collar and Cuffs.

Sizes: XS S M L XL 2XL



282 - Ladies' Sleeveless Jersey V-Neck Johnny Collar with Ottoman Detail on Collar.

Sizes: XS S M L XL 2XL

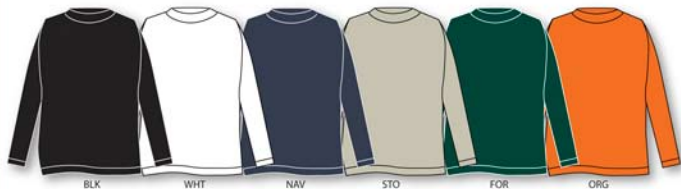


natureTECH™
EZ-Care/EZ-Wear

STYLE: 119

natureTECH™
EZ-Care/EZ-Wear

STYLE: 290MLS



BLK WHT NAV STO FOR ORG

119 - Men's Long Sleeve Jersey Mock Neck Collar and Knit Cuffs.

Sizes: S M L XL 2XL 3XL 4XL



BLK WHT NAV STO LTB PNK LAV

290MLS - Men's Long Sleeve Jersey Polo 3-Button Knit Collar and Cuffs

Colors: BLK, WHT, NAV & STO Sizes: S M L XL 2XL 3XL 4XL

290LLS - Ladies' Long Sleeve Jersey Polo 4-Button Knit Collar and Cuffs

Colors: BLK, WHT, NAV, LTB, PNK & LAV Sizes: XS S M L XL 2XL



LTB NAT YEL WHT

264 - Men's - Long-Sleeve Honeycomb Piqué Placket Shirt with Tailored Collar, Pocket and Ribbed-Cuff Sleeves

Sizes: S M L XL 2XL 3XL



natureTECH™
EZ-Care/EZ-Wear

STYLE: 263

natureTECH™
EZ-Care/EZ-Wear

STYLE: 270

natureTECH™
EZ-Care/EZ-Wear



WHT NAT NAV RED YEL BLK LTB RYL FOR JAD BRG PUR

260 - Men's Open Sleeve Jersey Placket Shirt with Western Yoke, Tailored Collar-2 Front Pockets.

Sizes: S M L XL 2XL 3XL 4XL

natureTECH™
EZ-Care/EZ-Wear



W/N
(WHITE-NAVY)

S/B
(STONE-BLACK)

RB/N
(REAL BLUE-NAVY)

N/S
(NAVY-STONE)

B/S
(BLACK-STONE)

263 - Men's Short Sleeve Jersey Shirt with Contrast Stitching Showing Western Yoke, Tailored Collar and Sleeve Detail.

Sizes: S M L XL 2XL 3XL

natureTECH™
EZ-Care/EZ-Wear



JAD BRG PUR BLK WHT RYL FOR LTB NAT NAV RED BUT RBL

270 - Men's Open Sleeve Jersey Placket Shirt with Tailored Collar, Left Breast Pocket and Open Sleeves.

Sizes: S M L XL 2XL 3XL 4XL

NatureTech™ Men's Tailored Collar Shirts

natureTECH™
EZ-Care/EZ-Wear

STYLE: 502

natureTECH™
EZ-Care/EZ-Wear

STYLE: 305

natureTECH™
EZ-Care/EZ-Wear

STYLE: 312



W/S (WHITE-BLACK) W/R (WHITE-ROYAL B.) R/B (RED-BLACK) M/W (MAROON-WHITE) W/N (WHITE-NAVY) B/S (BLACK-STONE) S/B (STONE-BLACK) W/R (WHITE-RED) RBN (REAL B. NAVY) N/R (NAVY-RED)

502 - Men's Open Sleeve Jersey Raised Ottoman Collar 2-Tone Side Panel.

Sizes: S M L XL 2XL 3XL 4XL

natureTECH™
EZ-Care/EZ-Wear



B/S
(BLACK-STONE)

N/L
(NAVY-LIME)

O/S
(ORANGE-STONE)

RBW
(REAL BLUE-WHITE)

305 - Men's Banded Sleeve Polo Thin Feeder Stripe Solid Trim-Collar Solid Insert on the Shoulder and Sides.

Sizes: S M L XL 2XL

natureTECH™
EZ-Care/EZ-Wear



BL1
(BLACK-TAN-STONE)

NA3
(NAVY-STONE-RED)

RES
(RED-STONE-NAVY)

RB4
(REAL BLUE-WHITE-NAVY)

ST6
(STONE-BLACK-TAN)

WH7
(WHITE-REAL BLUE-NAVY)

312 - Men's Open Sleeve Horizontal Stripe Jersey Polo with Knit Collar.

Sizes: S M L XL 2XL

natureTECH™
EZ-Care/EZ-Wear

LA MODE

**100% Combed Cotton ringspun
30/1 micro piqué. Soft, light,
breathable, rich in color and
plenty of colors to choose from.
A three button placket gives
this a dressy yet classic look
The perfect shirt to stay cool
on a warm day.**

That is COOL !





WHT CRM STO NAV RED SYE BLK



RYL LTB TAR GRN MIN LIM AQU



BRG ORC RBL LAV PNK HGR

1403 - Men's 100% Combed Cotton Micro Piqué 3-Button, Banded Sleeve Polo

Colors: WHT, CRM, STO, NAV, RED, SYE, BLK, RYL, LTB, TAR, GRN, MIN, LIM, AQU, BRG, ORC, RBL, LAV, PNK & HGR
 Sizes: S M L XL 2XL 3XL

1301 - Kid's 100% Combed Cotton Micro Piqué 3-Button Banded Sleeve Polo

Colors: WHT, NAV, RED, SYE & RBL Sizes: S M L XL



BLK WHT NAV BRG HGR TAR

1411 - Men's 100% Combed Cotton Micro Piqué 3-Button Long Sleeve Polo.

Sizes: S M L XL 2XL

LA MODE®
LADIES FIQUE



WHT CRM NAV RED CBL BLK MEL ORC AMB COR LAW



GRN LIM BLU AQU LTB RYL LAV RBL SYE STO PNK

2401 - Ladies' - 100% Combed Cotton Micro Piqué 3-Button Banded Short-Sleeve Polo

Sizes: SX S M L XL



WHT CRM NAV RED CBL BLK MEL COR



ORC MIN TEA AQU LTB LAV SYE PNK

2406 - Ladies' - 100% Combed Cotton Micro Piqué 3-Button Banded Sleeveless Polo

Sizes: SX S M L XL



WHT CRM NAV PNK BLK LIM LAV ORC MEL TAR

2411 - Ladies' - 100% Combed Cotton Micro Piqué 3-Button Long-Sleeve Polo

Sizes: XS S M L XL

CLARK GREGORY

STYLE: CG985

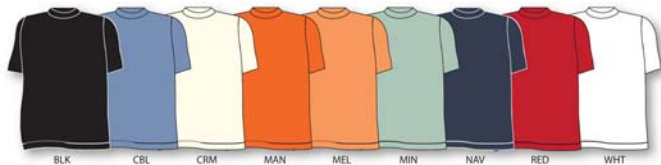
CLARK GREGORY

Our finest shirts.
Made from a select
60/2 extra long
100% Giza Cotton,
these yarns are the
best of the best.

STYLE: CG992

CLARK GREGORY

STYLE: CG996



BLK CBL CRM MAN MEL MIN NAV RED WHT

CG985 - Men's 60/2 Double Mercerized Giza Cotton Short-Sleeve Mock Neck Jersey.

Sizes: S M L XL 2XL



BLK CRM MAN MEL NAV WHT

CG992 - Men's 60/2 Double Mercerized Giza Cotton Jersey 3-Button Polo with Open sleeves.

Sizes: S M L XL 2XL



AQU BLK MIN MEL NAV RED TAR WHT

CG996 - Men's 60/2 Double Mercerized Giza Cotton Piqué 3-Button Polo with Open Sleeves.

Sizes: S M L XL 2XL

CLARK GREGORY

STYLE: CGL993T

CLARK GREGORY

STYLE: CGL998

CLARK GREGORY

STYLE: CGL997



CGL993T - Ladies' Double Mercerized Pima Cotton Jersey 1-Button Polo.

Sizes: XS M L XL 2XL

CGL904T - Ladies' 100% Double Mercerized Pima Cotton Lisle V-Neck Johnny Collar Short Sleeve Striped Polo Jersey.

Sizes: S M L XL 2XL



CGL992 - Ladies' 60/2 Double Mercerized Giza Cotton Jersey 3-Button Polo with Open sleeves

Sizes: XS M L XL 2XL



CGL998 - Ladies' 60/2 Double Mercerized Giza Cotton 3-Button Polo Sleeveless Jersey

Sizes: XS S M L XL 2XL



CGL997 - Ladies' Double Mercerized Pima Cotton Sleeveless Polo 6-Button Placket.

Sizes: XS S M L XL 2XL

CLARK GREGORY

STYLE: CG903

CLARK GREGORY

STYLE: CG904

CLARK GREGORY

STYLE: CG926



WHT CRM RBL NAV LIM ORC RED BLK

CG903 - Men's 60/2 Double Mercerized 100% Giza Cotton Jacquard Diamond with Open Sleeves.

Sizes: S M L XL 2XL



BLK/WHT GRE/CRM LIM/WHT NAV/OCE NAV/WHT NAV/CRM RED/WHT MEL/BUT

CG904 - Men's 60/2 Double Mercerized 100% Giza Cotton Thin Feeder Stripe Polo with Birdseye Collar

Sizes: S M L XL 2XL



OR4
(ORC/NAV)

RBS
(RBL/NAV)

WH6
(WHT/NAV)

LJ2
(LIM/NAV)

NA3
(NAV/NAV)

CG926 - Men's Double Mercerized Giza Cotton Multi-Stripe Shirt

Sizes: S M L XL 2XL

CLARK GREGORY

CLARK GREGORY

100% Pima Cotton Interlock
Is soft, absorbent, and silky
to the hand.
Specially treated to resist
shrinking, pilling and fading.



BLK

NAV

BRT

TAR

CG910 - Men's 100% Pima Cotton Interlock Long-Sleeve Polo

Sizes: S M L XL 2XL



BLK

WHT

NAV

BRT

TAR

CRM

CG900 - Men's 100% Pima Cotton Interlock Long-Sleeve Mock Neck

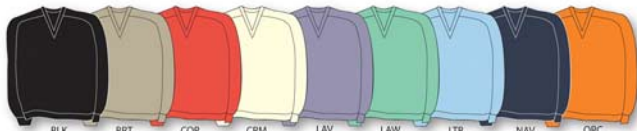
Sizes: S M L XL 2XL

100% CASHMERLON™

The look and feel of Cashmere with the easy care, comfort, and performance of CASHMERLON™ pill resistant soft Acrylic yarn. Piece dyed for softer hand feel and natural drape.



RBL RED TAR WHT YEL KGN LIM PNK



BLK BRT COR CRM LAV LAW LTB NAV ORC

1001 - Men's 100% Cashmerlon™ V-Neck Saddle Shoulder Sweater

COLORS: BLK, BRT, COR, CRM, LAV, LAW, LTB, NAV, ORC, RBL, RED, TAR, WHT & YEL Sizes: S M L XL 2XL

2001 - Ladies' 100% Cashmerlon™ V-Neck Saddle Shoulder Sweater

COLORS: BLK, COR, CRM, KGN, LAV, LIM, LTB, NAV, ORC, PNK, RBL, RED, WHT & YEL Sizes: XS S M L XL 2XL



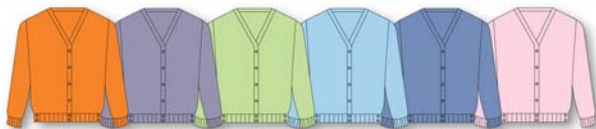
BLK CRM NAV RBL PNK WHT

1006 - Men's 100% Cashmerlon™ Vest

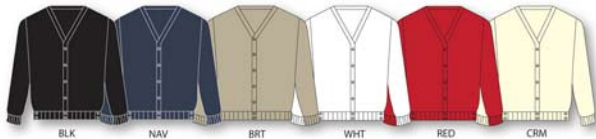
COLORS: BLK, CRM, NAV & RBL Sizes: S M L XL 2XL 3XL

2006 - Ladies' 100% Cashmerlon™ Vest

COLORS: BLK, CRM, NAV, RBL, PNK & WHT Sizes: XS S M L XL



ORG LAV LIM LTB RBL PNK



BLK NAV BRT WHT RED CRM

1002 - Men's 100% Cashmerlon™ V-Neck Cardigan Sweater

COLORS: BLK, NAV & BRT Sizes: S M L XL 2XL

2002 - Ladies' 100% Cashmerlon™ V-Neck Cardigan Sweater

COLORS: BLK, NAV, WHT, RED, CRM, ORC, LAV, LIM, LTB, RBL & PNK Sizes: XS S M L XL 2XL

CLARK GREGORY

STYLE: CG860





BLK



NAV

STYLE: CG861 - Men's 100% Pima Cotton 1/4 Zip Vest.

Sizes: S M L XL 2XL 3XL



BLK

NAV

CRM

PNK

PBL

RBL

CG860 - Men's 100% Pima Cotton Interlock 1/4 Zip Sweatshirt.

Colors: BLK, NAV, CRM, PNK, & PBL

Sizes: S M L XL 2XL

CGL860 - Ladies' 100% Pima Cotton Interlock 1/4 Zip Sweatshirt.

Colors: BLK, NAV, CRM, PNK, & RBL

Sizes: XS S M L XL 2XL



BLK

NAV

CRM

PNK

RBL

CGL862 - Ladies' 100% Pima Cotton Interlock Full Zipper Cardigan.

Sizes: XS S M L XL

CLARK GREGORY

STYLE: CG807

100% PIMA COTTON

Pima Cotton is recognized as one of the finest cottons anywhere in the world. We use only hand picked cotton with an extra long staple. These specifications make it possible to spin a very even, clean and silky yarn that produces deep rich colors when dyed. The final product is a sumptuous cotton sweater with fully fashioned detail.

CLARK GREGORY

STYLE: CG810



BLK BRT CBL CRM LTB NAV RBL RED TAR WHT PNK SPC

CG807 - Men's 100% Pima Cotton Full Fashion V-Neck Saddle Shoulder Sweater.

COLORS: BLK, BRT, CBL, CRM, LTB, NAV, RBL, RED, TAR & WHT Sizes: S M L XL 2XL

CGL807 - Ladies' 100% Pima Cotton Full Fashion V-Neck Saddle Shoulder Sweater.

COLORS: BLK, CRM, LTB, NAV, PNK, RBL, RED, SPC & WHT Sizes: XS S M L XL 2XL



BLK BRT CRM NAV CBL RED SPC TAR WHT

CG806 - Men's 100% Pima Cotton Full Fashion V-Neck Vest.

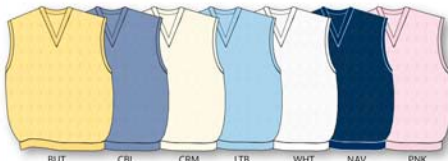
Sizes: S M L XL 2XL



BLK BRT CBL CRM NAV

CG805 - Men's 100% Pima Cotton Full Fashion Crewneck Saddle Shoulder Sweater.

Sizes: S M L XL 2XL



BUT CBL CRM LTB WHT NAV PNK

CG810 - Men's 100% Pima Cotton All-Over Cable V-Neck Vest.

COLORS: BUT, CBL, CRM, LTB, & WHT Sizes: S M L XL 2XL 3XL

CGL810 - Ladies' 100% Pima Cotton All-Over Cable V-Neck Vest.

COLORS: CRM, LTB, NAV, PNK, & WHT Sizes: S M L XL 2XL



BLK CRM NAV

CG814V - Men's 100% Pima Cotton Diamond Jacquard Vest.

Sizes: S M L XL 2XL

CLARK GREGORY

100% CASHMERE

Cashmere is one of the most rare and precious fibers in the world. Its lightness, its warmth and its caressing touch make cashmere one of life's ultimate pleasures.



HBG

NAV

BLK

STYLE: CG777 - Men's 100% Cashmere V-Neck Sweater.

Sizes: S M L XL 2XL



HBG

NAV

BLK

STYLE: CG700 - Men's 100% Cashmere V-Neck Vest.

Sizes: S M L XL 2XL

CLARK GREGORY

100% MERINO WOOL

Merino is one of the softest types of Wool available, due to finer fibers and smaller scales. Is excellent at regulating body temperature, provides some warmth, without overheating the wearer.

Merino Wool yarns give these sweaters luxurious softness and a supremely lightweight quality.

Clark & Gregory 100% Merino Wool Men's Sweaters & Vests



NAV PBL TAR BLK BRG NAT

CG600 - Men's 100% Merino Wool V-Neck Vest. Sizes: S M L XL 2XL



BLK NAV PBL CRM

CG609 - Men's 100% Merino Polo Sweater. Sizes: S M L XL 2XL



NAV PBL BLK BRG BRT NAT

CG610 - Men's 100% Merino Wool V-Neck Sweater. Sizes: S M L XL 2XL

STYLE: JK1729

LA MODE®
ACTIVE SPORTSWEAR
LOS ANGELES



BLACK-TAN
(B/T)

NAVY-TAN
(N/T)

TAN-NAVY
(T/N)

JK1729 - Men's 1/2 Sleeve V-Neck Windshirt with Stripe Trim.

Sizes: S M L XL 2XL

LA MODE®
ACTIVE SPORTSWEAR
LOS ANGELES



BLACK-TAN
(B/T)

NAVY-TAN
(N/T)

TAN-NAVY
(T/N)

FOREST-TAN
(F/T)

JK1730 - Men's V-Neck Windvest with Stripe Trim.

Sizes: S M L XL 2XL 3XL 4XL

STYLE: JK1730

La Mode Windvest & 1/2 Sleeve Windshirt

STYLE: 1240



BLK BRT NAV RBL TAR PNK

1240 - Men's 100% Polyester 1/4 Zip Performance Fleece.
COLORS: BLK, BRT, NAV, RBL, TAR Sizes: S M L XL 2XL 3XL

2240 - Ladies' 100% Polyester 1/4 Zip Performance Fleece.
COLORS: BLK, BRT, NAV, RBL & PNK Sizes: S M L XL

Men's & Ladies' 1/4 Zip Heavy Performance Fleece

CLARK GREGORY



BRITISH TAN-BLACK
(BTB)



RED-NAVY
(R/N)



TARTAN-BRITISH TAN
(TBT)

CG850 - Men's Polyester 1/4 Zip Performance Fleece
with Striped Collar and Cuffs

Sizes: S M L XL 2XL

STYLE: CG850



CLARK GREGORY



B/S

N/S

S/N

RBN

T/S

CG460 - Men's 100% Polyester Jacket with Polyurethane Waterproof Coating.

COLORS: B/S, N/S, S/N, RBN & T/S Sizes: S M L XL 2XL 3XL

CGL460 - Ladies' 100% Polyester Jacket with Polyurethane Waterproof Coating.

COLORS: B/S, N/S & S/N Sizes: XS S M L XL

100% Polyester with Polyurethane Waterproof Coating.



B/S

N/S

S/B

T/S

CG451 - 1/2 Sleeve Rain Shirt.

Sizes: S M L XL 2XL



BLK

NAV

STO

JK1703 - Men's Jacket with Hidden Hood

COLORS: BLK, NAV & STO Sizes: S M L XL 2XL

JK2703 - Ladies' Jacket with Hidden Hood

COLORS: BLK & NAV Sizes: S M L XL 2XL

JK1705 - Men's THINSULATE® Jacket with Hidden Hood

COLORS: BLK & NAV Sizes: S M L XL 2XL



B/S

S/B

N/S

RBN

S/N

CG450 - Men's 100% Polyester with Polyurethane Waterproof Coating, Polyester Lining Rain Jacket.

COLOR: B/S, S/B, N/S & RBN Sizes: S M L XL 2XL 3XL

CGL450 - Ladies' 100% Polyester with Polyurethane Waterproof Coating, Polyester Lining Rain Jacket.

COLOR: S/N Sizes: XS S M L XL



BLK

CGP453 - Men's 100% Nylon with Polyurethane Waterproof Coating, Polyester Lining, Adjustable Waist, Reach-through Pockets, Zippered Pocket and Legs.

COLORS: BLK & NAV Sizes: S M L XL 2XL

CGLP453 - Ladies' 100% Nylon with Polyurethane Waterproof Coating, Polyester Lining, Adjustable Waist, Reach-through Pockets, Zippered Pocket and Legs.

COLORS: NAV Sizes: S M L XL



NAV



BLK

STO

NAV

RH1504 100% Nylon with Polyurethane Coating, Polyester Lining Waterproof Rain Bucket

NAVY-REAL BLUE-WHITE GROUP





NAVY REAL BLUE WHITE GROUP

BLACK STONE GROUP





NAVY STONE RED GROUP







GOLF APPAREL BRANDS INC.

13301 S. Main Street Los Angeles, CA 90061

Tel: (310) 327-5188 1800-678-5246 Fax: (310) 715-8989

www.lamode.com